

BABOON MANAGEMENT OPTIONS

Baboon Fencing **SCENARIO 1** Entire Mountain Edge

- Vision for Tokai Park as people's place / gateway to the TMNP
- Gateway activities (picnicking, food serving activities, family oriented recreation activities) are incompatible with baboon presence.
- Human – Baboon conflict is inevitable unless an intervention is made.
- Baboon fencing is the logical low impact and humane option to reduce conflict.

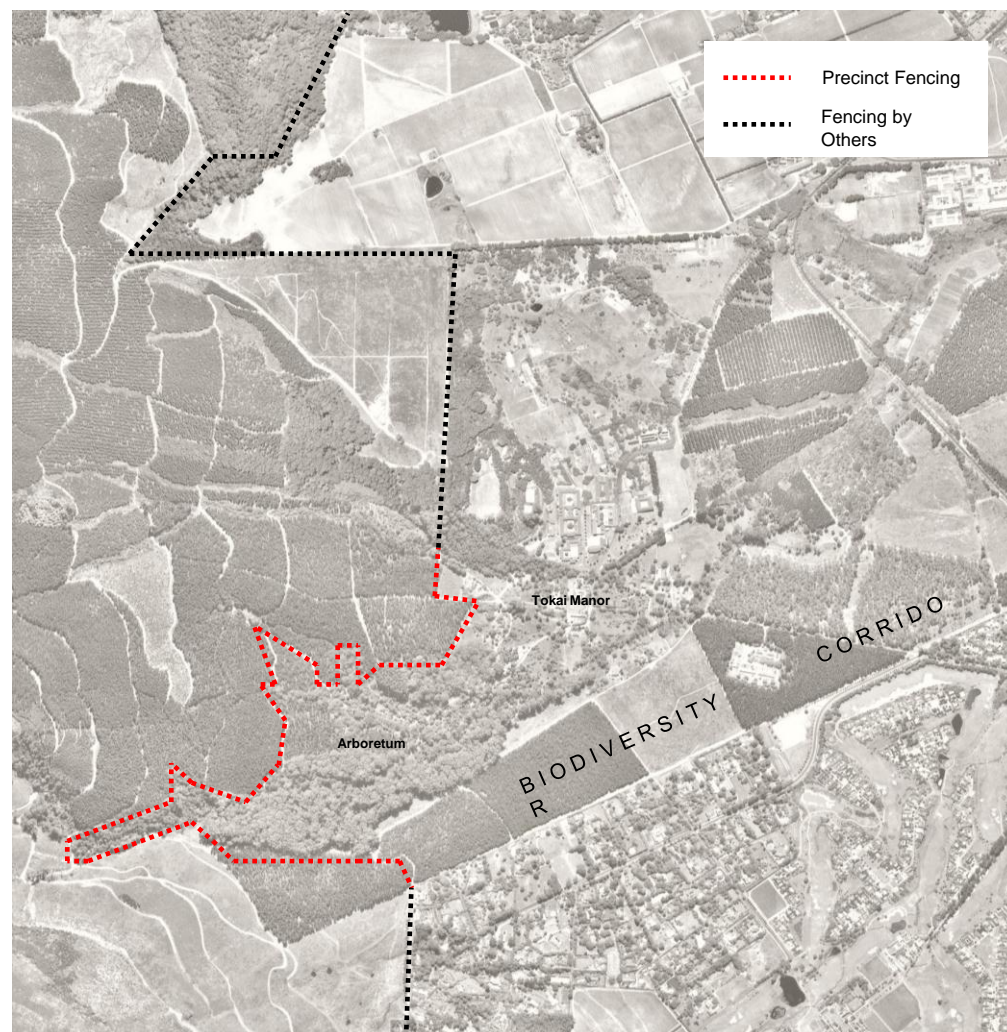
“Unless coupled with adequate baboon deterrents Tokai will experience unprecedented levels of human-baboon conflict ... thus, there should be effort focused on preventing baboons from accessing human modified habitats.”

Reference: Baboon Research Unit

Examples of baboon conflict with gateway activities.



Typical example of baboon fencing.



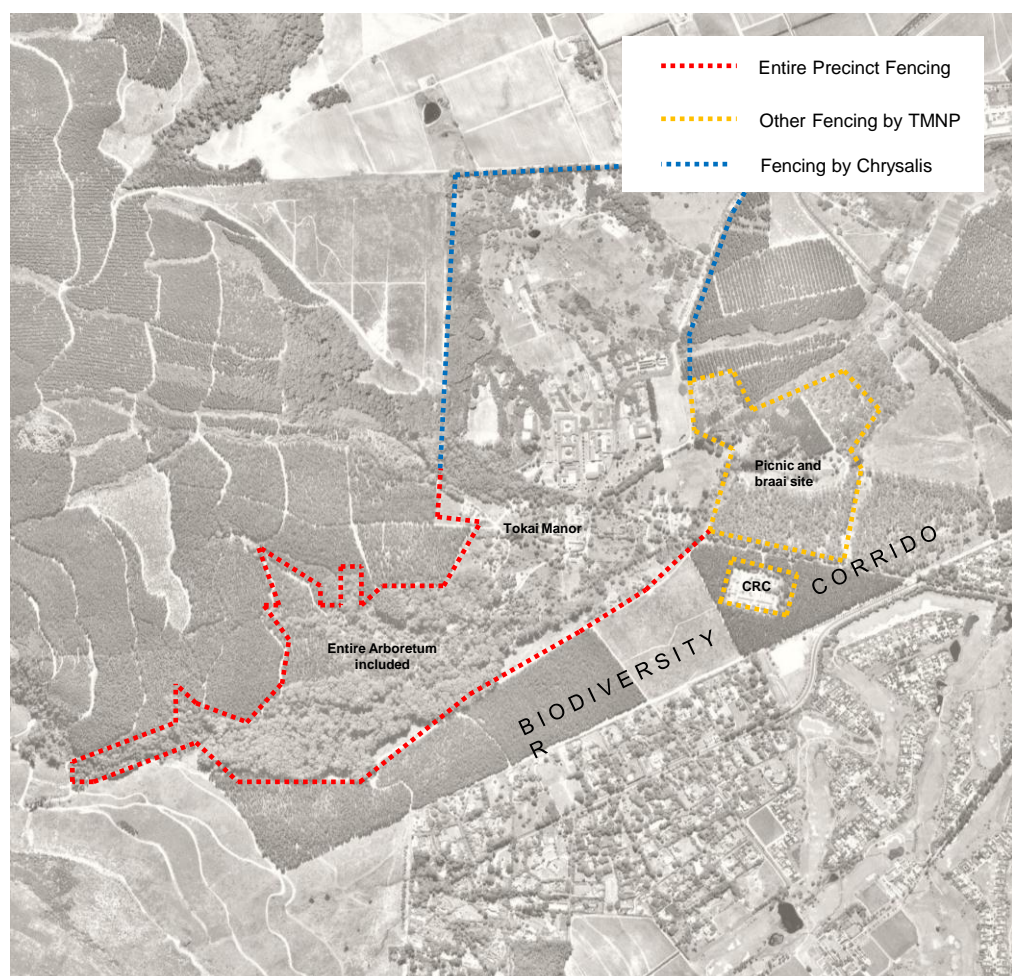
Advantages:

- Aligns to VISION of public environment in gateway precinct
- Saves money (Eliminates Zwaanswyk and Chrysalis fence)
- Visual impact less
- Minimises human - baboon conflict
- Creates clear zones
- Includes entire Arboretum
- Links to neighbours

Disadvantages:

- Eliminates baboons from Lower Tokai – roosting, foraging and water
- Reduces access to low lying habitat
- No baboon roosting in Arboretum
- Other species concerns
- Full EDGE protection impossible
- Wine farmers not interested

Baboon Fencing **SCENARIO 2** Entire Precinct incl. Arboretum and Chrysalis



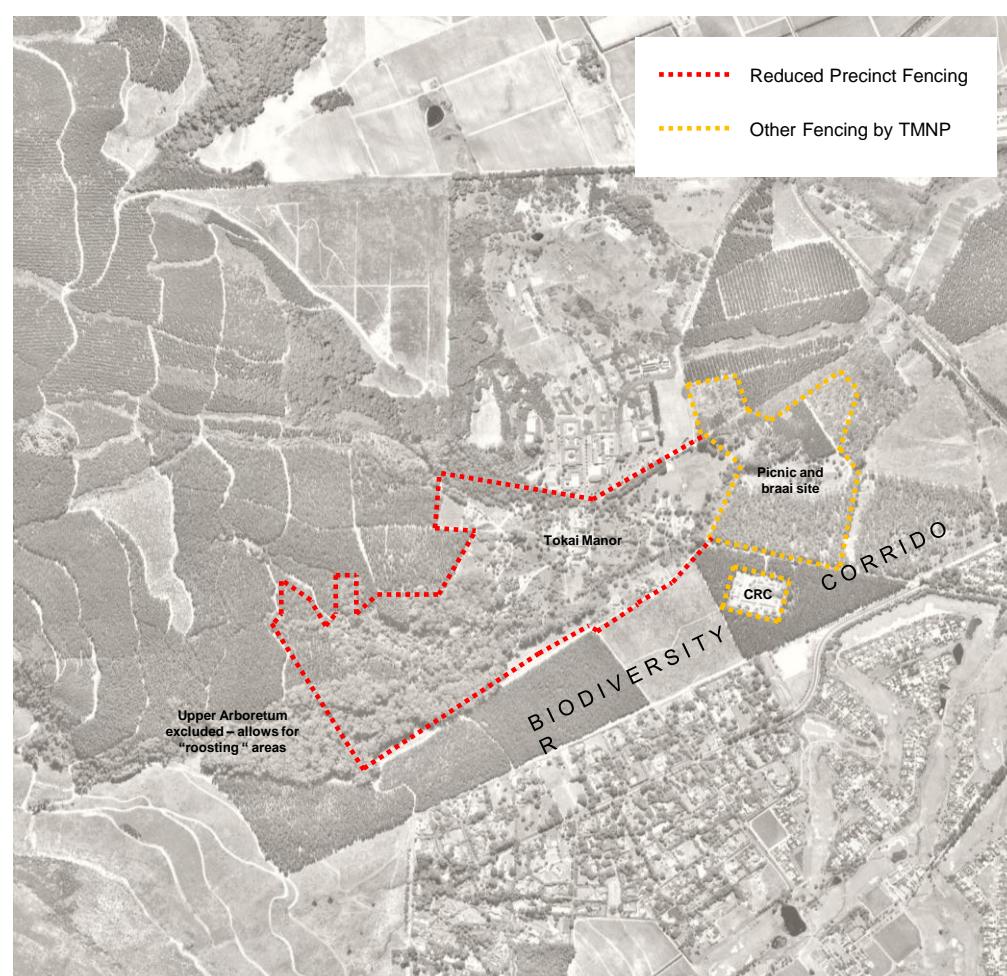
Advantages:

- Retains corridor to lower Tokai
- Includes entire Arboretum as safe public picnic space
- Could be done in conjunction with Chrysalis (cost saves)
- Affords most of Tokai Precinct as safe public place

Disadvantages:

- More expensive than **Scenario 1**
- Baboon – car conflict remains on Orpen road
- Zwaanswyk has to be independent
- Baboon access to section of Prinskasteel water

Baboon Fencing **SCENARIO 3** Core Precinct Only



Advantages:

- Retains connection to Lower Tokai
- Baboons have access to water in upper Arboretum
- Roosting opportunity in upper Arboretum
- Lower Arboretum as potential picnic site
- Similar in price to **Scenario 1**

Disadvantages:

- Upper Arboretum excluded
- Roosting opportunity in upper Arboretum – encourages baboons in vicinity of gateway